

HAMLET "B" OF BOCA WEST

P.U.D.

IN PART OF SECTION 10, TWP. 47 S., RGE. 42 E.

PALM BEACH COUNTY, FLORIDA
IN 2 SHEETS SHEET NO. 2

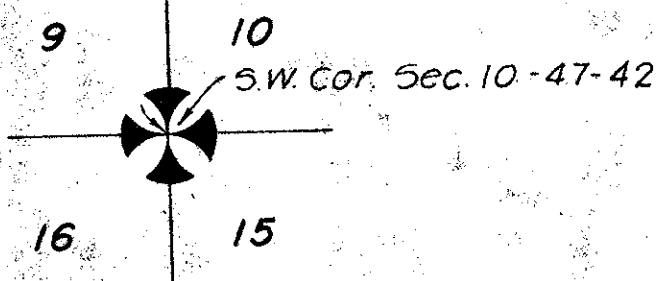
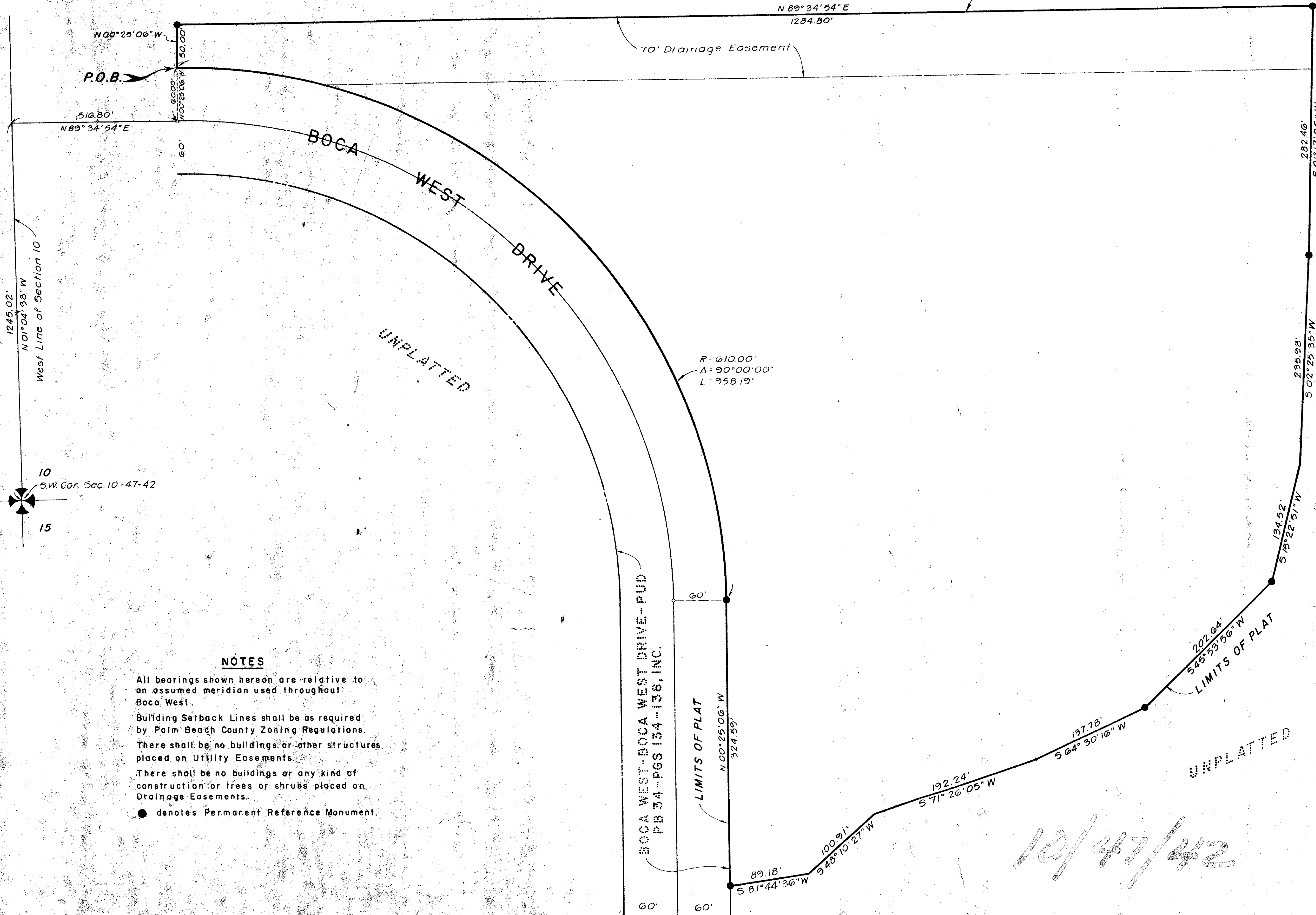
GEE & JENSON
ENGINEERS-ARCHITECTS-PLANNERS, INC.
WEST PALM BEACH, FLORIDA
FEBRUARY 1979

27



UNPLATTED

LIMITS OF PLAT



NOTES

- All bearings shown hereon are relative to an assumed meridian used throughout Boca West.
- Building Setback Lines shall be as required by Palm Beach County Zoning Regulations.
- There shall be no buildings or other structures placed on Utility Easements.
- There shall be no buildings or any kind of construction or trees or shrubs placed on Drainage Easements.
- denotes Permanent Reference Monument.

STATE OF FLORIDA
COUNTY OF PALM BEACH
This Plat was filed for record at this day of 1979 and duly recorded in Plat Book No. on page
By JOHN B. DUNKLE, Clerk Circuit Court
D.C.

0214-317

38

37/27

10/47/42

Hamlet "B" of Boca West PUD